

The image features a rustic, weathered wood background. A large, dark brown, irregularly shaped cutout of a tree trunk and canopy is centered on the page. The text "EcoCraft" is written across the middle of the tree cutout in a light beige, serif font. The letter "o" in "Eco" is replaced by a small green sprout with two leaves. A registered trademark symbol (®) is located at the end of the word "Craft".

EcoCraft®



NOVOLEX's™ Bagcraft® Packaging brand offers the industry's broadest range of paper based specialty value-added food packaging products including specialty bags, sandwich wraps, and other specialty sheet and roll products. Bagcraft® Packaging products are used across a wide range of foodservice, restaurant, supermarket, convenience store, bakery, food processor and industrial packaging applications. Bagcraft® is also a leader in sustainability innovation with its EcoCraft® brand of flexible foodservice packaging. With a legacy of superior quality and product innovation that spans over six decades, Bagcraft® is the consultant of choice to drive your business growth and brand differentiation with custom packaging solutions.

www.bagcraft.com



NOVOLEX's™ values are based in the traditions of all of our brands and present you with the industry's foremost in packaging choice and sustainability. NOVOLEX's™ mission is to continue the tradition of leadership established by our brands, and to create new value and synergies by providing you with an industry-leading packaging expert that covers the full spectrum of your operations. NOVOLEX's™ family of packaging brands will create new value and synergies by covering the full spectrum of retailer and institutional companies packaging requirements.

To learn the more about the NOVOLEX™ family of historic packaging brands visit novolex.com.

www.novolex.com

EcoCraft® Product Guide Index

Deli & Foodservice Packaging

- 9 Deli & Foodservice Packaging Material Comparison
- 9 Deli & Foodservice Packaging Product Applications
- 10 ToGo! Hot Meal Packaging
- 12 Sandwich Wraps & Bags

Bakery Packaging

- 15 Bakery Packaging Material Comparison
- 15 Bakery Packaging Product Applications
- 16 Single Serve Cookie & Pastry Bags
- 17 Dubl Wax® Bags & Pick Up Sheets
- 18 Bakery Pan Liners
- 20 Stand Up Window Bakery Bags
- 20 Bread Bags

Meat & Butcher Packaging

- 22 Interfolded Scale Sheets
- 22 Freezer Paper

Specialty Packaging

- 23 Theater Style Popcorn Bags
- 23 Coffee Bags
- 23 Java Jacket® Sleeves

Custom Converting & Printing Capabilities (inside back cover)

www.bagcraft.com/ecocraft

Watch Our Video

“Simple Story About Sustainability”

Located on the EcoCraft® home page is our “Simple Story About Sustainability” video which summarizes the life-cycle of our EcoCraft® natural paper versus bleached paper packaging. Watch the video without leaving the website!



www.bagcraft.com

- Review updated stock product information
- Learn more about sustainability
- Download our brochures and catalogs
- Information on new promotions and offers
- Access the #1 flexible foodservice packaging resource

Find a Local Representative

For more information about our custom converting and graphic capabilities, find your local representative at www.bagcraft.com/rep

What Is Sustainable Packaging?

In 2005, the SPC completed version 1.0 of the Definition of Sustainable Packaging. This definition represents an important first step in articulating a common understanding of the term "sustainable packaging." It provides a common vision and a framework for understanding activities directed toward improving packaging, and continues to inform the future vision of the coalition and its individual member-companies. This definition has been widely adopted throughout the packaging industry.

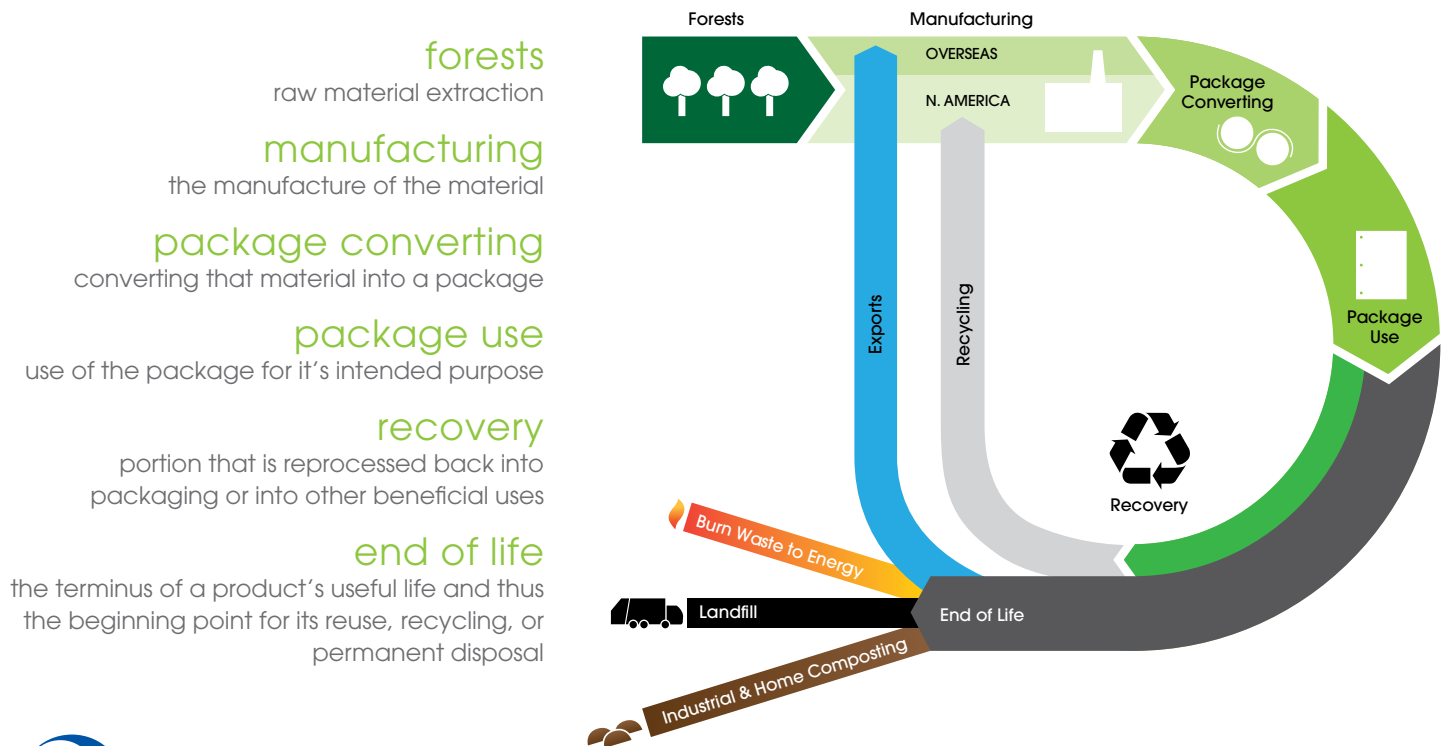
Sustainable Packaging, Defined:

- Is beneficial, safe & healthy for individuals and communities throughout its life cycle;
- Meets market criteria for both performance and cost;
- Is sourced, manufactured, transported, and recycled using renewable energy;
- Optimizes the use of renewable or recycled source materials;
- Is manufactured using clean production technologies and best practices;
- Is made from materials healthy in all probable end of life scenarios;
- Is physically designed to optimize materials and energy;
- Is effectively recovered and utilized in biological and/or industrial closed loop cycles.

Bagcraft® and De Luxe® Packaging are members of the Sustainable Packaging Coalition



Flexible Paper Packaging Life Cycle



forests

raw material extraction

manufacturing

the manufacture of the material

package converting

converting that material into a package

package use

use of the package for its intended purpose

recovery

portion that is reprocessed back into packaging or into other beneficial uses

end of life

the terminus of a product's useful life and thus the beginning point for its reuse, recycling, or permanent disposal

Sustainable Paper Packaging FAQs

Does EcoCraft® packaging cost more than bleached packaging?

EcoCraft® packaging is competitive with bleached packaging. One of the key reasons for the rapid growth of our EcoCraft® flexible foodservice packaging brand is our insistence that these products be developed with a focus on economic sustainability. Economic sustainability is one of the three basic foundations of the “Triple bottom line” approach. To make a significant impact on reducing the waste of raw materials, we must keep our EcoCraft® products affordable so they can be purchased in higher volumes. This practical approach also allows us to consult more consumers and businesses on the fundamentals of sustainable packaging. The rapid brand growth and positive environmental impact helps us spread the momentum of change so that more food service businesses will understand the benefits of taking simple steps with their packaging on their journey toward a sustainable future.

Is paper compostable? Are EcoCraft® products compostable?

Yes, in most cases paper is compostable because it is made from the cellulose fibers of a tree or other natural fiber source. We were the first flexible foodservice packaging company to have our environmentally improved product line certified by Cedar Grove composting in the Northwest in 2007. Our Cedar Grove certified products are listed on their website.

(<http://www.cedar-grove.com/acceptable/Accepted%20List.asp>).

We update the information as more products are accepted by Cedar Grove. Lightweight food grade paper is compostable in most cases. Industrial composting is an excellent waste stream choice for food grade flexible packaging. We support the expansion of the composting waste stream so that we can all drive more of our paper based packaging into this end of life scenario. Bagcraft® is a member of the Sustainable Packaging Coalition. We supported and participated in the Sustainable Packaging Coalition to study the “local realities” of compostable waste streams. You can review the study titled “Compostable Packaging: The reality on the ground” on the S.P.C. website.

(<http://www.sustainablepackaging.org/projects/?project=Projects>)

Can you use post consumer waste recycled pulp content in your EcoCraft® foodservice packaging?

We are carefully pursuing this option. Our largest concern is based on public safety due to the concerns over the direct contact of fresh consumable food with post consumer waste recycled paper. The Food & Drug Administration does allow some post consumer recycled waste to be used in flexible paper food packaging but it must be carefully screened and compliant with their strict guidelines for purity and sourcing. One of our current concerns is the functionality of PCW paper in foodservice applications that require grease and moisture barriers. We continue to lobby suppliers for improvements to the quality, functionality and availability of unbleached FDA “direct food contact” compliant paper. Early in 2014 we started the process of trialing a new generation of food grade PCW natural paper to test it against our high standards of safety, functionality, quality, and affordability. We are making strides in our journey of improvement and we hope to introduce EcoCraft® DubLife® recycled packages in 2015.

Can you recycle paper based food packaging?

The answer really depends on the waste sorting abilities of the local recycling company in your area. Used flexible packaging that has food build up or stains is often sorted out of the recycling waste stream. There are a few local companies that have alternative waste streams set up for fiber based packaging to divert it away from the landfill into alternative waste streams. Waxed paper or paperboard is rarely accepted by sorting plants that feed the recycling waste stream. In the future, industrial recyclers will expand their sorting capabilities and technologies to process more materials than they do today. Until those changes happen we can still make an impact by focusing our sustainable improvement efforts on the raw material at the beginning of a package’s life cycle. We see a promising future in converting recycled post consumer waste paper that is made from the corrugated box waste stream. This natural unbleached recycled paper helps close the loop and allows us to expand our sustainable impact.

Since the 1940s, annual growth of new trees has always exceeded the number cut down. By 1992, tree growth outpaced harvest by 34% and the volume of wood in the forest was 360% more than in 1920.

– International Paper Company, “Down to Earth” Insights

360%

Why EcoCraft® Products?

Foodservice packaging made from unbleached natural paper is more than just a sustainable look or marketing trend. Unbleached natural paper was chosen for the EcoCraft® line due to its real impact in reducing raw material waste. The chart below presents an overview of the significant waste reduction advantages in producing unbleached natural paper.

Improved Sustainability Through Natural Papers

Higher Yield
from tree to paper

Less Energy
for manufacturing

Less Waste
in water & solids

	Baseline Paper - BLEACHED	Target Paper - NATURAL	Difference Between Baseline & Target	
Wood Use	4,444 tons	3,509 tons	935 tons	17,293 Trees
Net Energy	36,476 million BTUs	29,777 million BTUs	6,699 million BTUs	74 Homes/Yr.
Purchased Energy	23,893 million BTUs	20,225 million BTUs	3,668 million BTUs	41 Homes/Yr.
Sulfur Dioxide (SO ₂)	28,579 pounds	22,949 pounds	5,630 pounds	1,023 18-Wheelers/Yr.
Greenhouse Gasses	5,859,953 lbs. CO ₂ equiv.	5,233,412 lbs. CO ₂ equiv.	626,541 lbs. CO ₂ equiv.	57 Cars/Yr.
Nitrogen Oxides (NO _x)	10,385 pounds	8,568 pounds	1,817 pounds	7 18-Wheelers/Yr.
Wastewater	25,702,450 gallons	21,239,198 gallons	4,463,252 gallons	7 Swimming Pools
Solid Waste	2,019,040 pounds	1,416,870 pounds	602,170 pounds	21 Garbage Trucks

Based on producing 1,000 tons of food grade paper

Reduce Waste with Natural Paper

Comparison of Baseline & Target

Based on producing 1,000 tons of food grade paper

Bleached Paper

Natural Paper

Wood Use 935 tons or 17,293 Trees	
Net Energy 6,699 million BTUs or 74 Homes /yr.	
Sulfur Dioxide (SO ₂) 5,630 pounds or 1,023 18-Wheelers/yr.	
Greenhouse Gasses 626,541 lbs. CO ₂ equiv. or 57 Cars/yr.	
Nitrogen Oxides (NO _x) 1,817 pounds or 7 18-wheelers/yr.	
Wastewater 4,463,252 gallons or 7 Swimming Pools	
Solid Waste 602,170 pounds or 21 Garbage Trucks	

DID YOU
KNOW?

20%

of wood is saved by
using natural versus
bleached paper fiber*

Purchasing EcoCraft®
is an easy way to take
a simple step toward a
sustainable future

Natural Advantages of EcoCraft®

- Made with FDA food-grade, 100% unbleached, chlorine-free paper
- Packed in 100% recycled paperboard inner-carton and tray dispenser packaging to reduce raw-material waste
- Soy-blended dry wax on interfolded sheets reduce reliance on petroleum wax
- New dispenser carton and tray design includes printed facts and information about the sustainability benefits of EcoCraft®
- EcoCraft® products, on average, contain 20% pre-consumer waste fiber
- Multiple EcoCraft® products are third-party certified compostable
- Reduces your carbon footprint by purchasing form-fitting, “right size,” flexible packaging with high case counts and small case-cube size
- An experienced national network of sales representatives that can help advise your business on ways to improve your sustainable packaging design

We believe in the “Triple Bottom Line” approach of continuous improvement in sustainable packaging design:

Social Responsibility – good for the people

Ecological Responsibility – good for the planet

Economic Responsibility – affordable choices

With our EcoCraft® brand, we were the first company to offer a full stock line of unbleached, sustainable foodservice packaging in North America. We believe sustainability is an ongoing journey of continuous improvement and evolution. This approach propels us to constantly enhance our sustainable practices and products. **This commitment to affordability and innovation has allowed Bagcraft® to create the most recognized brand of sustainable flexible packaging available in the industry.**

*Environmental impact estimates were made using the Environmental Paper Network Paper Calculator Version 3.2. For more information visit www.papercalculator.org.



Our EcoCraft® Journey

Deli & Foodservice Packaging



Improved packaging means less waste, fewer materials used, and savings on transportation, manufacturing, shipping and storage.”

– H. Lee Scott,
Former Wal-Mart President and CEO

Deli & Foodservice Packaging Material Comparison

Fair Good Very Good Excellent ✓ = Characteristic of Product

Deli Packaging Characteristics	Dry Wax Interfolded Deli Wrap & Liner	GR Sandwich Wraps & Basket Liners	GR Sandwich & Dubl Open™ Bags	I-Rap™ GR Sandwich Wraps & Tray Liners	Dubl Shield™ Sandwich Wraps	ToGo! Hot Meal Packaging	ToGo! Hot Meal Window Packaging	Unbleached Food Tray
Grease Resistance								
Moisture Resistance								
Moisture Absorption								NA*
Breathability								NA*
Ease of Eating								
Quality Perception								
Closure & Dead Fold								NA*
Ease of Food Loading								
Heated Holding Case								
Microwaveable	✓	✓	✓	✓	✓	✓		✓
Compostable*	✓	✓	✓	✓	✓	✓		✓

* NA = Characteristic Not Applicable

Deli & Foodservice Packaging Product Applications

Product Application	Packages With Anti-Fog Windows	Non-Window Packages
Whole Rotisserie Chicken*	300587 300586 300788 300767	300797
Half Rotisserie Chicken*	300556 300787	300796
2-4 Pc Fried Chicken	300606 300791 300768	300588 300793 300766
5-8 Pc Fried Chicken	300609 300556 300792	300589 300794 300796
9-12 Pc Fried Chicken***	300587 300586 300590 300788 300767	300797
1-2 Pc Fried Chicken		300588 300793 300766
3-4 Chicken Strips & Sides	300606 300791 300768	300588 300793 300766
5-8 Chicken Strips & Sides	300609 300792	300589 300794 300796
9-12 Chicken Strips & Sides	300587 300586 300788 300767	300797
6-12 Wings/Appetizers	300606 300791 300768	300588 300793 300766
13-20 Wings/Appetizers	300609 300792 300787	300767 300589 300794 300797
Family Size Wings/Appetizers	300587 300586 300788 300767	
Half Slab of Ribs**	300787	



IMPORTANT!
For Best Results:

- * ADD 3 Lb Food Tray 300699 & Tray Liner 300384
- ** ADD 3 Lb Food Tray 300699
- *** ADD Tray Liner 300384

EcoCraft® ToGo! Hot Meal Packaging

ToGo! Hot Meal Window Packaging

- Clear anti-fog windows maximize visibility and impulse sales
- Significantly more sustainable than rigid plastic containers
- Innovative ventilation system keeps food flavorful and crispy
- Grease resistant, high barrier paper provides stain protection



Item #	UPC #	Description	Dimensions	Case Pack	Case Weight	Case Cube	Cases/ Pallet	Pallet TI HI
300606	10072181006062	Window Deli Bag 4lb with Vents ToGo!	5 x 3 x 9 5/8	500	14#	0.82	50	10x5
300609	10072181006093	Window Deli Bag 8lb with Vents ToGo!	6 x 4 1/2 x 11 1/2	500	22#	1.29	35	7x5
300556	10072181005560	Window Deli Bag Small with Vents Tac Seal ToGo!	8 1/4 x 5 1/4 x 8 3/4	250	15#	1.01	36	9x4
300586	10072181005867	Window Deli Bag Large with Vents Tac Seal Flame	8 1/4 x 5 1/4 x 10 3/4	250	18#	1.11	30	6x5
300587	10072181005874	Window Deli Bag Large with Vents Tac Seal ToGo!	8 1/4 x 5 1/4 x 10 3/4	250	18#	1.11	30	6x5
300590	10072181005904	Window Deli Bag XLarge with Vents Tac Seal ToGo!	8 1/4 x 5 1/4 x 12	250	20#	1.44	28	7x4
300787	10072181007878	Fresh To Go! Window Deli Bag with Vents Tac Seal	8 1/4 x 5 1/4 x 8 3/4	250	16#	1.01	36	9x4
300788	10072181007885	Fresh To Go! Window Deli Bag with Vents Tac Seal	8 1/4 x 5 1/4 x 9 3/4	250	16#	1.11	30	6x5
300767	10072181007670	Window Deli Bag with Vents Tac Seal Deli Bistro ToGo!	8 1/4 x 5 1/4 x 9 3/4	250	16#	1.11	30	6x5
300791	10072181007915	Fresh To Go! Window Deli Bag 4lb with Vents	5 x 3 x 9 5/8	500	14#	0.82	50	10x5
300768	10072181007687	Window Deli Bag 4lb with Vents Deli Bistro ToGo!	5 x 3 x 9 5/8	500	14#	0.82	50	10x5
300792	10072181007922	Fresh To Go! Window Deli Bag 8lb with Vents	6 x 4 1/2 x 11 1/2	500	21#	1.31	35	7x5

ToGo! Insulated Deli Carryout Bags

- Innovative insulating design keeps food hot longer than standard deli packaging
- Grease resistant, high barrier paper provides stain protection
- Significantly more sustainable than rigid plastic containers
- Fried foods stay crispy due to our high-performance ventilation and breathable paper
- Superior performance with or without a food tray



Item #	UPC #	Description	Dimensions	Case Pack	Case Weight	Case Cube	Cases/ Pallet	Pallet TI HI
300796	10072181007960	Deli Bag 8lb low profile with vents Fresh ToGo!	6 x 4 x 8 1/2	500	17#	1.01	36	9x4
300797	10072181007977	Deli Bag Natural Fresh To Go!	8 1/4 x 5 1/4 x 8 3/4	250	13#	1.01	36	9x4

ToGo! Hot Meal Packaging

- Breathable paper and ventilation keeps fried food crispy
- Grease proof and moisture resistant paper provides superior stain protection
- Innovative EZ Tear Perf Bag™ 's horizontal perforation provides quick access in one EZ Tear motion, creating a compact "bag tray"



Item #	UPC #	Description	Dimensions	Case Pack	Case Weight	Case Cube	Cases/ Pallet	Pallet TI HI
300588	10072181005881	EcoCraft® Deli Bag 4lb with Vents ToGo!	5 x 3 1/8 x 9 11/16	500	12#	0.82	50	10x5
300589	10072181005898	EcoCraft® Deli Bag 8lb with Vents ToGo!	6 1/8 x 4 x 12 3/8	500	20#	1.29	35	7x5
300793	10072181007939	Fresh ToGo! Deli Bag 4lb with Vents	5 x 3 1/8 x 9 11/16	500	12#	0.82	50	10x5
300794	10072181007946	Fresh ToGo! Deli Bag 8lb with vents	6 1/8 x 4 x 12 3/8	500	20#	1.31	35	7x5
300766	10072181007663	Deli Bag 4lb with Vents Deli Bistro ToGo!	5 x 3 1/8 x 9 11/16	500	12#	0.82	50	10x5
23550	79594235501	EcoCraft® GR EZ Tear Perf Bag™ Natural ToGo!	4 7/8 x 3 3/16 x 9 11/16	500	7#	0.31	128	16x8

ToGo! Hot Meal Food Trays

- Unbleached trays reduce raw material waste by 20%
- High-quality tray construction holds up to the most demanding applications
- Coated with a moisture and grease proof barrier for superior performance



Item #	UPC #	Description	Dimensions	Case Pack	Case Weight	Case Cube	Cases/ Pallet	Pallet TI HI
300694	10072181006949	1/4lb Food Tray	1/4lb	1M	8#	0.70	105	21x5
300695	10072181006956	1/2lb Food Tray	1/2lb	1M	11#	0.68	60	15x4
300696	10072181006963	1lb Food Tray	1lb	1M	15#	1.19	60	15x4
300697	10072181006970	2lb Food Tray	2lb	1M	16#	1.13	36	12x3
300698	10072181006987	2 1/2lb Food Tray	2 1/2lb	500	11#	0.72	72	18x4
300699	10072181006994	3lb Food Tray	3lb	500	18#	0.85	55	11x5
300700	10072181007007	5lb Food Tray	5lb	500	16#	1.05	36	9x4

Fresh ToGo! Window Pizza Bag & Tray

- Convenient "Combo Pack" case - with 250 trays and bags
- Natural EcoCraft® bag provides artisan "homemade" image
- Grease resistant package fits 7" round pizzas and 6" square slices
- Hybrid bag & tray design provides rigidity for additional protection
- Superior window visibility for easy product identification on display



Item #	UPC #	Description	Dimensions	Case Pack	Case Weight	Case Cube	Cases/ Pallet	Pallet TI HI
300304	10072181003047	EcoCraft® Pizza Bag w/Window & Tray ToGo!	7 1/2 x 2 x 11	250	17#	1.31	35	7x5

EcoCraft® Sandwich Wraps & Bags

NEW



Grease Resistant Wraps

- Treated to resist grease penetration and staining
- Packaged in 100% post-consumer recycled dispenser cartons
- Breathable paper keeps wrapped breads fresh, allowing steam and moisture to escape

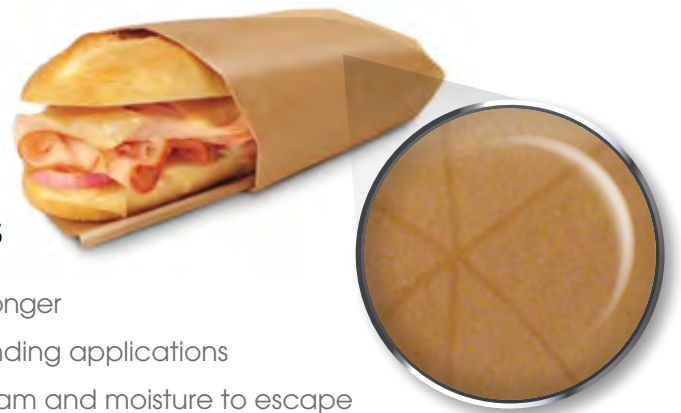
Item #	UPC #	Description	Dimensions	Case Pack	Case Weight	Case Cube	Cases/ Pallet	Pallet TI HI
300897	10072181008974	EcoCraft® GR Paper Wrap & Liner NK1212 Natural	12 x 12	5@1M	33#	1.08	36	9x4
300899	10072181008998	EcoCraft® GR Paper Wrap & Liner NK1414 Natural	14 x 14	4@1M	37.5#	1.14	30	6x5
300898	10072181008981	EcoCraft® GR Paper Wrap & Liner NK1516 Natural	15 x 16	3@1M	36#	1.22	24	4x6
300877	10072181008776	EcoCraft® GR Wrap Natural Black Check	12 x 12	2@1M	15#	0.42	45	9x5
300878	10072181008783	EcoCraft® GR Wrap Natural Artisan Design	12 x 12	2@1M	15#	0.48	72	9x8

I-Rap® Insulating Sandwich Wrap & Liners

- Provides grease resistance and heat retention without a wax, foil or poly barrier
- Prevents breads and buns from getting soggy with a breathable paper that allows steam and moisture to escape naturally



Item #	UPC #	Description	Dimensions	Case Pack	Case Weight	Case Cube	Cases/ Pallet	Pallet TI HI
300384	10072181003849	Paper/Paper 2ply Insulated Tray Liner Natural	6 x 9	4@250	7#	0.14	364	28x13
300393	10072181003931	Paper/Paper 2ply Insulated Wrap Natural	12 x 12	2M	23#	0.68	63	9x7
300394	10072181003948	Paper/Paper 2ply Insulated Wrap Natural	15 x 16	1M	20#	0.60	72	6x12



Dubl Shield® Insulating Sandwich Wraps

- Triangle design insulating air pockets keep food hot and fresh longer
- Superior grease and moisture resistance is perfect for demanding applications
- Breathable paper keeps wrapped breads fresh, allowing steam and moisture to escape

Item #	UPC #	Description	Dimensions	Case Pack	Case Weight	Case Cube	Cases/ Pallet	Pallet TI HI
300848	10072181008486	EcoCraft® Dubl Shield® Insulated Paper Wrap Natural	12 x 12	4@500	23#	0.86	36	9x4
300849	10072181008493	EcoCraft® Dubl Shield® Insulated Paper Wrap Natural	15 x 16	2@500	19#	0.79	48	6x8
300839	10072181008394	EcoCraft® Dubl Shield® Insulated Paper Wrap Natural	10 1/2 x 13	2M	20#	0.69	50	10x5

Interfolded Soy Wax Deli Sheets

- Easy-to-grab sheets in a convenient, pop-up box dispenser
- Treated with a soy wax blend that reduces the reliance on petroleum
- Multiple uses: food wrap, scale sheet, pick up sheet and basket liner



Item #	UPC #	Description	Dimensions	Case Pack	Case Weight	Case Cube	Cases/ Pallet	Pallet TI HI
010001	10787074007179	EcoCraft® Interfolded Soy Wax Tissue NK6T Natural	6 x 10 3/4	10@1M	21#	0.74	54	9x6
016008	10787074007186	EcoCraft® Interfolded Dry Wax Deli Paper NK8 Natural	8 x 10 3/4	12@500	23#	0.88	45	9x5
016010	10787074007193	EcoCraft® Interfolded Dry Wax Deli Paper NK10 Natural	10 x 10 3/4	12@500	29#	1.10	27	9x3
016012	10787074007209	EcoCraft® Interfolded Dry Wax Deli Paper NK12 Natural	12 x 10 3/4	12@500	34#	1.29	48	12x4
016015	10787074007339	EcoCraft® Interfolded Dry Wax Deli Paper NK15 Natural	15 x 10 3/4	12@500	41#	1.58	36	12x3

Grease Resistant Fry Bags

- Offered in three popular sizes to accommodate multiple applications
- Grease resistant bags are the economical choice for fries and side orders



Item #	UPC #	Description	Dimensions	Case Pack	Case Weight	Case Cube	Cases/ Pallet	Pallet TI HI
300043	10072181000435	EcoCraft® GR French Fry Bag Natural	4.5 x 3.5	2M	5#	0.27	108	18x6
300046	10072181000466	EcoCraft® GR French Fry Bag Natural	4.5 x 4.5	1M	3#	0.24	175	25x7
300049	10072181000497	EcoCraft® GR French Fry Bag Natural	5.5 x 4.5	1M	4#	0.24	84	12x7

Grease Resistant Sandwich and Hot Dog Bags and Cone basket Liners

- Grease resistant paper provides stain protection
- Economical choice for single-serve hot and cold food applications
- Dubl Open® bags open on two sides for easy loading and eating on-the-go



Item #	UPC #	Description	Dimensions	Case Pack	Case Weight	Case Cube	Cases/ Pallet	Pallet TI HI
300100	10072181001005	EcoCraft® GR Sandwich Bag NK25 Natural	6 1/2 x 1 x 8	2M	14#	1.02	77	11x7
300414	10072181004143	EcoCraft® GR Sandwich Bag NK18 Natural	6 x 3/4 x 6 1/2	2M	11#	0.80	54	9x6
300106	10072181001067	EcoCraft® GR XLarge Sandwich Bag Artisan	6 1/2 x 2 x 8	1M	11#	0.82	60	10x6
300009	10072181000091	EcoCraft® GR Hot Dog Bag Natural	3 1/2 x 1 1/2 x 8 1/2	1M	5#	0.35	96	12x8
300107	10072181001074	EcoCraft® GR Dubl Open® Bag Natural	7 x 6 3/4	2M	13.5#	0.60	65	13x5
300101	10072181001012	EcoCraft® GR Large Dubl Open® Bag Natural	9 x 10	1M	15#	0.57	84	12x7
300119	10072181001197	EcoCraft® GR Large Dubl Open® Bag Artisan	9 x 10	1M	13.5#	0.57	84	12x7

Bakery Packaging



“The nation behaves well if it treats the natural resources as assets which it must turn over to the next generation increased, and not impaired in value.” — Theodore Roosevelt

EcoCraft® Bakery Packaging Material Comparison

Fair
Good
Very Good
Excellent
✓ = Characteristic of Product

Bakery Packaging Characteristics	Bakery Tissue Pickup Sheets	Interfolded Soy Wax Sheets	Dry Wax Single Serve Bakery Bags	G.R. Single Serve Pastry Bags	G.R. Dubl Open™ Single Serve Pastry Bags	Pinch Bottom Bread Bags	Dubl-Panel® Window Bread Bags	Dubl Wax® SOS Bakery Bags
Breathability								
Closure & Dead Fold								
Ease of Eating	NA*	NA*				NA*	NA*	
Operator Ease								
Grease Resistance								
Moisture Absorption								
Moisture Resistance								
Quality Perception								
Extended Shelf Life	NA*	NA*						
Microwaveable	✓	✓	✓	✓	✓	✓		✓
Recyclable				✓	✓	✓		
Compostable	✓	✓	✓	✓	✓	✓		

* NA = Characteristic Not Applicable

EcoCraft® Bakery Packaging Product Applications

Not Recommended
Good Value
Better Value
Best Value

Bakery Packaging Applications	Dry Wax Single Serve Bakery Bags	G.R. Single Serve Pastry Bags	G.R. Dubl Open™ Single Serve Pastry Bags	Pinch Bottom Bread Bags	Dubl-Panel® Window Bakery Bags	Dubl Wax® SOS Bakery Bags
Artisan Breads						
Bagels						
Biscotti						
Bread Loafs - Soft						
Brownies						
Buns & Rolls - Hard						
Buns & Rolls - Soft						
Cinnamon Rolls						
Cookies - Hard						
Cookies - Soft						
Croissants						
Croutons & Crostini						
Desserts & Tarts						
Donuts - Iced						
Donuts - Plain						
Donuts - Frosted						
Naan & Flatbreads						

EcoCraft® Single Serve Cookie & Pastry Bags

Dry Wax Bags

- Economical choice for single-serve bakery applications
- Improves moisture resistance and wet strength
- Convenient package for eating on-the-go



Item #	UPC #	Description	Dimensions	Case Pack	Case Weight	Case Cube	Cases/ Pallet	Pallet TI HI
300235	10072181002354	EcoCraft® Dry Wax Grazing Bag Box Dispenser Artisan	6 x 3/4 x 6 1/2	5@200	8#	0.53	90	18x5

Grease Resistant Bags

- Grease resistant paper provides stain protection
- Economical choice for single-serve bakery applications
- Convenient package for eating on-the-go



Item #	UPC #	Description	Dimensions	Case Pack	Case Weight	Case Cube	Cases/ Pallet	Pallet TI HI
300100	10072181001005	EcoCraft® GR Pastry/Cookie Bag NK25 Natural	6 1/2 x 1 x 8	2M	14#	1.02	77	11x7
300414	10072181004143	EcoCraft® GR Pastry/Cookie Bag NK18 Natural	6 x 3/4 x 6 1/2	2M	11#	0.80	54	9x6
300106	10072181001067	EcoCraft® GR XLarge Pastry/Cookie Bag Artisan	6 1/2 x 2 x 8	1M	11#	0.82	60	10x6

Dubl Open® Bags

- Open on two sides for easy loading and eating on-the-go
- Can be used as a one bag solution for multiple product applications
- Grease proof paper protects consumers from messy stains



Item #	UPC #	Description	Dimensions	Case Pack	Case Weight	Case Cube	Cases/ Pallet	Pallet TI HI
300107	10072181001074	EcoCraft® Grease Resistant Dubl Open® Bag Natural	7 x 6 3/4	2M	13.5#	0.60	65	13x5
300101	10072181001012	EcoCraft® Grease Resistant Large Dubl Open® Bag Natural	9 x 10	1M	15#	0.57	84	12x7
300119	10072181001197	EcoCraft® Grease Resistant Large Dubl Open® Bag Artisan	9 x 10	1M	13.5#	0.57	84	12x7

NEW Product Innovation

Our EcoCraft® Single Serve Window Bags offer a 'right-size' approach to showcasing on the go bakery foods.



Single Serve Window Bags

- Innovative design provides superior visibility that energizes impulse sales
- Reduce packaging waste and cost with our "right size" single serve bags
- Convenient and portable package for eating deli and bakery foods on-the-go
- Grease resistant paper provides stain protection
- Custom sizes and prints available with your logo or brand

Item #	UPC #	Description	Dimensions	Case Pack	Case Weight	Case Cube	Cases/ Pallet	Pallet TI HI
300114	10072181001142	EcoCraft® Grease Resistant Single Serve Window Bag	5 x 1 1/2 x 7	500	4#	0.24	175	25x7
300116	10072181001166	EcoCraft® Grease Resistant Single Serve Window Bag	6 1/2 x 2 x 8 1/2	500	5#	0.40	96	16x6

EcoCraft® Dubl Wax® Bags & Pick Up Sheets

Dubl Wax® Bakery Bags

- Dubl Wax® coating allows bags to breath while keeping baked goods fresh
- Bakery bags can be placed in the freezer without additional wrapping



Item #	UPC #	Description	Dimensions	Case Pack	Case Weight	Case Cube	Cases/ Pallet	Pallet TI HI
300282	10072181002828	4lb EcoCraft® SOS Bag Dubl Wax® Artisan	5 x 3 1/8 x 9 11/16	500	12#	0.57	84	12x7
300283	10072181002835	6lb EcoCraft® SOS Bag Dubl Wax® Artisan	6 x 3 5/8 x 11	500	13#	0.66	63	9x7
300284	10072181002842	8lb EcoCraft® SOS Bag Dubl Wax® Artisan	6 1/8 x 4 x 12 3/8	500	16#	1.00	40	8x5
300286	10072181002866	12lb EcoCraft® SOS Bag Dubl Wax® Artisan	7 1/8 x 4 3/8 x 13 11/16	500	19#	0.81	45	15x3

Bakery Pick Up Sheets

- Bakery tissue is an economical choice for picking up donuts and pastries
- EcoCraft® bakery tissue is unbleached and treated with soy wax blend
- Saddle packs can be folded to form an easy-to-grab sheet dispenser



Item #	UPC #	Description	Dimensions	Case Pack	Case Weight	Case Cube	Cases/ Pallet	Pallet TI HI
010001	10787074007179	EcoCraft® Interfolded Soy Wax Tissue NK6T Natural	6 x 10 3/4	10@1M	21#	0.74	54	9x6

Use **Bake 'N' Reuse** Pan Liners Twice and Reduce Your Cost by Half

- Bake 'N' Reuse™ Pan Liners provide a unique combination of cost reduction and improved sustainability benefits.
- The release coating is chromium free and durable, which allows you to use the liner for multiple bakes.
- The liners are made with unbleached natural paper, which reduces raw material waste by 20% versus white (bleached) liners.
- Our corrugated outer box advertises the Bake 'N' Reuse concept in English and in Spanish so your employees will remember to help you reduce your costs per bake.

maximize
sustainability:
certain types of baked
products allow up
to 3 to 4 uses

(not intended for multiple applications if product contains peanut or other known allergens)

EcoCraft® Artisan Pan Liners

Artisan Pan Liners with Standard Release

- Unbleached and compostable under the ASTM 2020-92 standard
- FDA, Kosher and Pareve certified
- Packaged in an easy-to-open carton for convenient, single-sheet dispensing



Item #	UPC #	Description	Dimensions	Case Pack	Case Weight	Case Cube	Cases/ Pallet	Pallet TI HI
030012	10787074010056	EcoCraft® Artisan Half Pan Liners	12 1/8 x 16 3/8	1M	13#	0.42	90	6x15
030025	10072181300252	EcoCraft® Artisan Pan Liners	16 3/8 x 24 3/8	1M	25#	0.83	60	4x15

EcoCraft® Bake 'N' Reuse™ Pan Liners

Bake 'N' Reuse™ Pan Liners with Chromium-Free Release

- Multiple-bake pan liner significantly reduces your costs while reducing raw material waste
- Made from unbleached, grease proof paper with a chromium-free, multi-bake release
- FDA, Kosher and Pareve certified
- Packaged in an easy-to-open carton for convenient, single-sheet dispensing



Item #	UPC #	Description	Liner Size	Case Pack	Case Weight	Case Cube	Cases/ Pallet	Pallet TI HI
030008	10787074010001	EcoCraft® Bake 'N' Reuse™ Half Pan Liners	12 1/8 x 16 3/8	1M	13#	0.42	120	10x12
030010	10787074005120	EcoCraft® Bake 'N' Reuse™ Pan Liners	16 3/8 x 24 3/8	1M	25#	0.79	60	4x15

Comparison Of Pan Liner Features

Find the right pan liner for your application

Item #	Pan Size	Liner Material	Release Coating	Sticky Foods	Number of Bakes	Recommended Baking Temp	Kosher & Pareve	Microwavable	Biodegradable
030012	Half	Unbleached Grease Proof	CFR		1-2	400° F	✓	✓	✓
030025	Full	Unbleached Grease Proof	CFR		1-2	400° F	✓	✓	✓
030008	Half	Unbleached Grease Proof	CFR	✓	2-4	400-425° F	✓	✓	✓
030010	Full	Unbleached Grease Proof	CFR	✓	2-4	400-425° F	✓	✓	✓

EcoCraft® Bakery and Bread Bags



Stand Up Window Bakery Bags

- Lock in freshness with our paper/poly duplex design

Item #	UPC #	Description	Dimensions	Case Pack	Case Weight	Case Cube	Cases/ Pallet	Pallet TI HI
300789	10072181007892	EcoCraft® Window Bakery Bag w/Tac Closure Natural	8 1/4 x 5 1/4 x 10 3/4	250	18#	1.11	30	6x5



Artisan Bread Bags

- Fresh, eye-catching “Artisan” design improves impulse sales
- EcoCraft®, Artisan bags made with natural, unbleached paper
- Breathable paper bag releases moisture for crispy crusts

Item #	UPC #	Description	Dimensions	Case Pack	Case Weight	Case Cube	Cases/ Pallet	Pallet TI HI
300868	10072181008684	EcoCraft® Bread Bag Artisan	4 1/2 x 2 1/2 x 24	1M	28#	1.50	24	4x6
300869	10072181008691	EcoCraft® Bread Bag “Baguette” Artisan	4 1/2 x 2 1/2 x 28	1M	32#	1.72	20	5x4
300870	10072181008707	EcoCraft® Bread Bag “French” Artisan	5 1/4 x 3 1/4 x 20	1M	27#	1.53	30	6x5
300871	10072181008714	EcoCraft® Bread Bag “Italian” Artisan	6 x 3 1/2 x 18	1M	28#	1.65	24	6x4

Artisan Foil Garlic Bread Bags

- Fresh, eye catching “Artisan” design improves impulse sales
- Garlic bread bag is lined with natural, unbleached paper



Item #	UPC #	Description	Dimensions	Case Pack	Case Weight	Case Cube	Cases/ Pallet	Pallet TI HI
300860	10072181008608	EcoCraft® Foil Garlic Bread Bag NK Liner Artisan	4 1/2 x 3 x 20	500	18#	0.84	56	8x7
300861	10072181008615	EcoCraft® Foil Garlic LG Bread Bag NK Liner Artisan	5 1/4 x 3 1/4 x 20	500	20#	0.95	42	6x7

EcoCraft® Dubl-Panel® Bread Bags



Artisan Dubl-Panel® Bread Bags

- Reduce packaging waste and cost with our “right size” bread bags
- Variety of sizes in the Artisan print design provide a matching, upscale look
- Dubl-Panel® bag provides clear visibility that energizes impulse sales

Item #	UPC #	Description	Dimensions	Case Pack	Case Weight	Case Cube	Cases/ Pallet	Pallet TI HI
300891	10072181008912	EcoCraft® Dubl-Panel® Bread Bag Artisan	3 1/2 x 2 x 14	500	9#	0.82	50	10x5
300893	10072181008936	EcoCraft® Dubl-Panel® Bread Bag Artisan	3 1/2 x 2 x 26	500	12#	1.11	28	4x7
300895	10072181008950	EcoCraft® Dubl-Panel® Bread Bag Artisan	4 1/2 x 2 1/2 x 24	500	15#	1.08	36	6x6
300894	10072181008943	EcoCraft® Dubl-Panel® Bread Bag Artisan	4 1/2 x 2 1/2 x 28	500	17#	1.11	28	4x7
300865	10072181008653	EcoCraft® Dubl-Panel® Bread Bag Artisan	6 x 3 1/2 x 13 1/2	500	13#	1.01	36	9x4
300863	10072181008639	EcoCraft® Dubl-Panel® Bread Bag Artisan	6 1/2 x 2 x 17 3/4	500	18#	1.29	35	7x5
300892	10072181008929	EcoCraft® Dubl-Panel® Bread Bag Artisan	6 1/2 x 3 x 21	500	17#	1.08	36	6x6
300864	10072181008646	EcoCraft® Dubl-Panel® Bread Bag Artisan	8 x 3 1/2 x 15	500	15#	1.01	36	9x4

“Determine never to be idle. No person will have occasion to complain of the want of time, who never loses any. It is wonderful how much may be done, if we are always doing.” — Thomas Jefferson



Meat & Butcher Packaging

Interfolded Soy Wax Scale Sheets - Regular Weight

- Treated with a soy wax blend that reduces the reliance on petroleum
- Easy-to-grab sheets in a convenient, pop-up box dispenser
- Multiple uses: food wrap, scale sheet, pick up sheet and basket liner



Item #	UPC #	Description	Dimensions	Case Pack	Case Weight	Case Cube	Cases/ Pallet	Pallet TI HI
010001	10787074007179	EcoCraft® Interfolded Soy Wax Tissue NK6T Natural	6 x 10 3/4	10@1M	21#	0.74	54	9x6
016008	10787074007186	EcoCraft® Interfolded Dry Wax Deli Paper NK8 Natural	8 x 10 3/4	12@500	23#	0.88	45	9x5
016010	10787074007193	EcoCraft® Interfolded Dry Wax Deli Paper NK10 Natural	10 x 10 3/4	12@500	29#	1.10	27	9x3
016012	10787074007209	EcoCraft® Interfolded Dry Wax Deli Paper NK12 Natural	12 x 10 3/4	12@500	34#	1.29	48	12x4
016015	10787074007339	EcoCraft® Interfolded Dry Wax Deli Paper NK15 Natural	15 x 10 3/4	12@500	41#	1.58	36	12x3

Freezer Paper

- Improved sustainability due to less paper and poly material needed to meet functionality requirements offering an innovative product design
- Less reliance on petroleum based poly resin which is non-renewable
- Reduced paper fiber used due to a 80% recycled sheet with 40% post-consumer fiber content
- Soft and pliable freezer sheet with improved feel and acceptance with operations
- Improved barrier and "Moisture Vapor Transmission Rate" due to natural filler in poly blend

NEW Product Innovation

EcoCraft®'s breakthrough Freezer Paper lowers costs, improves sustainability, and enhances food quality.

We've significantly enhanced sustainability by reducing paper consumption and poly material needed to meet functionality requirements in our improved freezer paper product line.



Item #	UPC #	Description	Dimensions	Case Pack	Case Weight	Case Cube	Cases/ Pallet	Pallet TI HI
184018	10787074010858	EcoCraft® Freezer Roll Paper/Poly Regular Natural	18" x 1000'	1 Roll	18#	0.95	40	20x2
184024	10787074010865	EcoCraft® Freezer Roll Paper/Poly Regular Natural	24" x 1000'	1 Roll	24#	1.25	20	20x1

Specialty Packaging

EcoCraft® Theater Style Popcorn Bags

- Perfect for theatres, stadiums, theme parks and schools
- Colorful vintage stock print designs
- Educational sustainability message printed on the gusset
- Grease proof, two-ply paper keeps the butter in the bag
- Economical and sustainable alternative to cartons and tubs



Item #	UPC #	Description	Dimensions	Case Pack	Case Weight	Case Cube	Cases/ Pallet	Pallet TI HI
300611	10072181006116	EcoCraft® Theater Popcorn Bag 46oz Red Stripe	4 1/4 x 2 1/2 x 8 1/4	1M	21#	1.34	32	8x4
300612	10072181006123	EcoCraft® Theater Popcorn Bag 85oz Blue Stripe	5 1/2 x 3 1/4 x 8 5/8	500	15#	0.86	48	12x4
300613	10072181006130	EcoCraft® Theater Popcorn Bag 130oz Green Stripe	7 1/2 x 3 1/2 x 9 1/4	500	20#	1.22	30	10x3
300614	10072181006147	EcoCraft® Theater Popcorn Bag 170oz Black Stripe	7 1/2 x 3 1/2 x 11 3/4	250	12#	0.78	48	12x4

EcoCraft® Coffee Bags

- Paper/Paper construction is compostable with tin tie removed
- Grease proof paper liner prevents stains
- Easy to seal and reseal with tin tie closure system
- Perfect for high volume whole bean and ground coffee users



Item #	UPC #	Description	Dimensions	Case Pack	Case Weight	Case Cube	Cases/ Pallet	Pallet TI HI
300947	10072181009476	EcoCraft® Bakery & Coffee Bag Paper Lined Tin Ties 11lb Natural	4 1/4 x 2 1/2 x 9 3/4	1M	34#	2.60	24	6x3

EcoCraft® Java Jacket® Sleeves

- Superior grip feature provides safe portability
- Heat activated glue bonds the jacket to the cup for added slip resistance
- Our innovative design makes it simple to pop open the jacket sleeve with one hand which improves operator speed



Item #	UPC #	Description	Dimensions	Case Pack	Case Weight	Case Cube	Cases/ Pallet	Pallet TI HI
300904	10072181009049	EcoCraft® Java Jacket® Sleeve Unprinted	4 3/4 x 2 1/2 Fits 12-24oz	1300	21	1.6	40	8x5
300905	10072181009056	EcoCraft® Java Jacket® Sleeve Artisan Cup Design	4 3/4 x 2 1/2 Fits 12-24oz	1300	21	1.6	40	8x5

Sustainability Glossary

BACKYARD COMPOSTING

The controlled decomposition of organic food waste and yard trimmings in urban, suburban and rural backyards, which produces a nutrient-rich top soil. Composting is considered waste source reduction, not recycling, because the composted materials never enter the municipal waste stream.

epa.gov

BIODEGRADABLE

A material that will decompose into naturally occurring, harmless components over time with exposure to air, sunlight and/or moisture.

BIOMASS

Organic, non-fossil material that is available on a renewable basis. Biomass includes all biological organisms and their metabolic by-products, including forest and mill residues, agricultural crops and waste, wood and wood waste, animal waste, aquatic plants, and municipal and industrial waste.

by Nathan Shedroff

BIOPLASTIC

Bioplastics are a form of plastics derived from renewable biomass sources, such as wood, vegetable oil, corn starch, pea starch or microbiota, rather than traditional plastic, which are derived from petroleum. See Nature Works and Innovia for examples.

CARBON FOOTPRINT

A measure of the impact human activities have on the environment in terms of the amount of green house gases produced, measured in units of carbon dioxide. It is meant to be a useful measure for individuals and organizations to conceptualize their personal (or organizational) impact in contributing to global warming.

CLOSE-LOOP RECYCLING

The practice of collecting used materials from customers for remanufacture by the same firm or industry group. Example: Interface Carpet's Flor product line or Patagonia's Common Threads Garment Recycling.

COMPOSTABLE

A material that biodegrades substantially under composting conditions into carbon dioxide, methane, water and compost biomass. Compostable is a subset of biodegradable. The size of the material is a factor in determining compostability because it affects the rate of decomposition. A product that is "compostable" is one that can be placed into a composition of decaying biodegradable materials, and eventually turns into a nutrient-rich material.

CRADLE TO GRAVE

The full life cycle assessment (LCA) of a product or process, from the extraction of raw materials, through manufacturing and use, to final disposal. This assessment examines the product's net environmental burden, including the consumption of raw materials and energy, emissions to air and water, and solid waste generation. Cradle to Grave can also refer to the responsibility a company takes for the entire life cycle of a product, service or program, from design to disposal or termination.

ECO-EFFICIENCY

An effort to achieve the best possible efficiency throughout the creation, use and disposal of a product or service. Eco-Efficiency simply means "doing more with less." It is not a synonym for sustainability as it considers only the environmental and economic aspects of the product without regard for the social implications.

by Nathan Shedroff

ENVIRONMENTAL IMPACT

Any change to the environment, good or bad, that wholly or partially results from industrial/manufacturing activities, products, services, land usage or natural events. Energy consumption, greenhouse gas (CO₂-eq) production, toxicity and natural resources depletion are some of the key environmental impact areas.

END-OF-LIFE

The terminus of a product's useful life and thus the beginning point for its reuse, recycling or permanent disposal.

GREENWASHING

A term used to describe the act of misleading consumers regarding the environmental practices of a company or the environmental benefits of a product or service.

Sustainability Glossary

INDUSTRIAL COMPOSTING

Similar to backyard composting but requiring industrial-scale processes, such as higher heats and more controlled conditions, which allow for a greater variety of inputs, including: meat, bones, fats, bioplastics and food service paper-products.

LIFE CYCLE ASSESSMENT (LCA)

A set of procedures put in place to assess the environmental aspects and potential impact directly associated with a product, process or service system throughout its life cycle. Includes: 1) Compiling an inventory of relevant energy and material inputs and environmental releases 2) Evaluating their potential environmental impacts associated with the identified inputs and releases 3) Interpreting the results to help you make more informed decisions.

epa.gov

MOBIUS LOOP

The common nickname for the recycling symbol. The three arrows represent the main steps in the process: 1) The collection and separation of recyclable materials 2) The manufacturing of these materials into new products 3) The purchase and use of these recycled products.

Sustainable Graphic Design, Wiley Publishing, 2009

POST-CONSUMER WASTE (PCW)

Materials or finished products, particularly paper and plastic, that have served their intended use and have been diverted or recovered from the waste stream. Post-consumer fiber materials include recyclables collected in commercial and residential recycling programs, such as office paper, cardboard, newsprint and packaging materials. Recovered office paper waste makes up the majority of post-consumer fiber content used in recycled copy and printing papers.

recycledproducts.org

RECYCLABLE

As defined by the EPA, a product or package that can be collected, separated or otherwise recovered from the solid waste stream for reuse. "Recyclable" is one of the few sustainability terms formally enforced by the FTC on product packaging and advertising.

epa.gov

RECYCLED CONTENT

The proportion, by mass, of pre- and post-consumer recycled material in a product or packaging. Some companies count only post-consumer content as recycled.

www.csa.ca

RENEWABLE RESOURCE

A resource that is replenished at a rate comparable or faster than its rate of consumption. Therefore, the resource will continue to be available for future generations.

SUSTAINABILITY

Meeting the economic, ecological and social needs of the day without impairing the chances or development of future generations.

(UN-Conference, Rio de Janeiro, 1992)

SUSTAINABLE FOREST MANAGEMENT

The stewardship and use of forests and forest land in a way and at a rate that maintains their biodiversity, productivity, regeneration capacity, vitality and their potential to fulfill now and in the future relevant ecological, economic and social functions at local, national and global levels, and does not cause damage to other ecosystems.

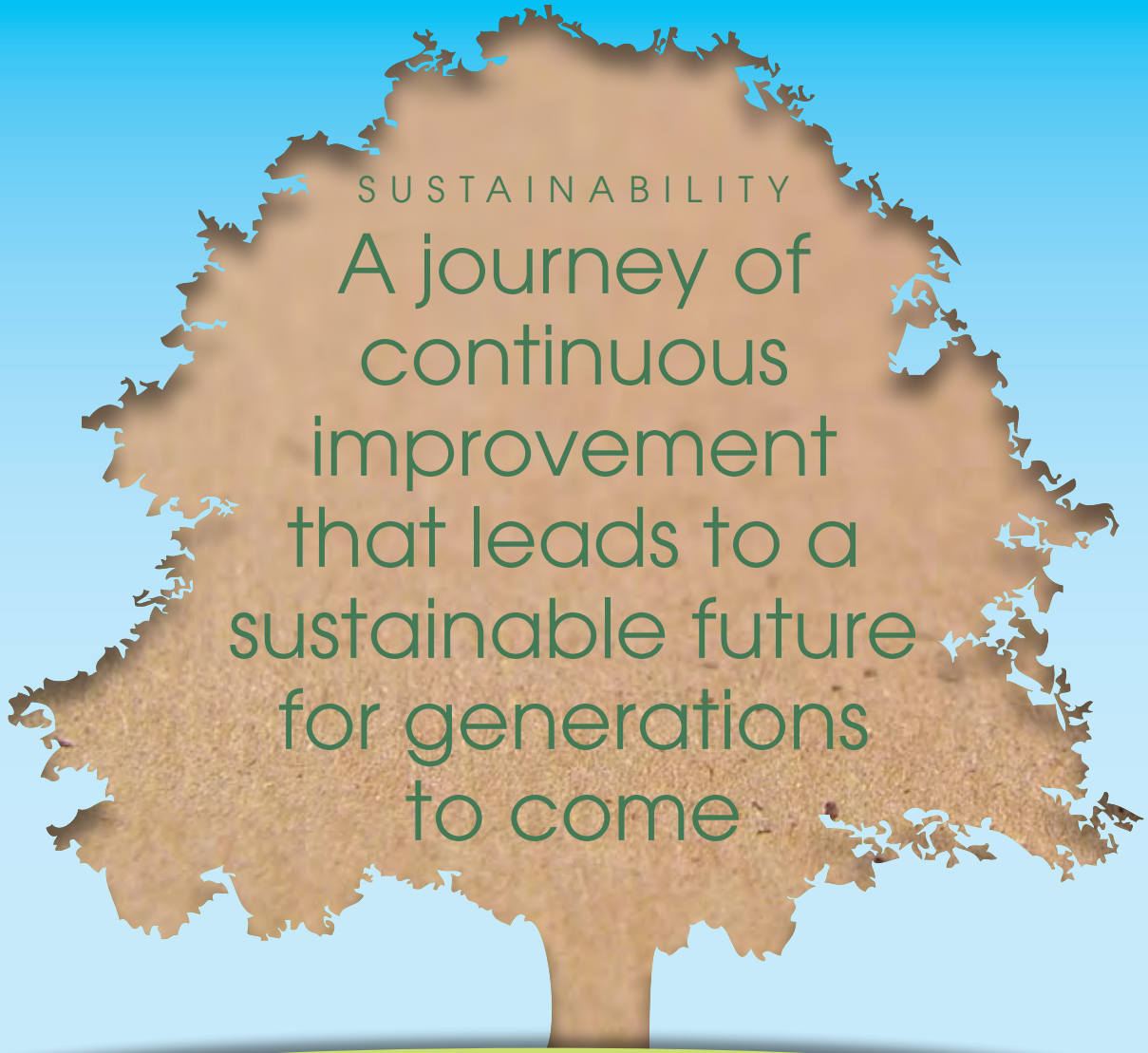
TRANSPARENCY

An organization's disclosure of their environmental, economic and social impacts in an effort to assure all players are working toward long-term sustainability goals. Corporate Social Responsibility (CSR) reports are often the delivery mechanism.

TRIPLE BOTTOM LINE

An expanded baseline for measuring performance, adding social and environmental dimensions to the traditional monetary benchmark. Triple bottom line, or TBL, is often expressed through examples: People, Planet, Profit; or Ecology, Economy, Equality.

esd.rgs.org



SUSTAINABILITY

A journey of
continuous
improvement
that leads to a
sustainable future
for generations
to come

GOOD DESIGN IS VITAL

Every design decision, from the choice of a base material to the design of a product label, can substantially influence whether a package ultimately enhances or degrades the overall quality of our communities, economies and environment. Sustainable design is a complex challenge, no doubt. However, since the vast majority of the overall energy and environmental impacts of a package can be determined in the design phase, it is also extremely important. The integration of physical design, material selection and end of life considerations into an effective design process will help you to **minimize the negative impacts** while at the same time **optimize the positive benefits** of your design solutions. In other words, you can satisfy your creative ambitions and at the same time be environmentally responsible.

— Sustainable Packaging Coalition & GreenBlue

Bagcraft® and De Luxe® Packaging are members of the Sustainable Packaging Coalition



Custom Converting & Printing Capabilities

Bagcraft® offers the broadest range of specialty bag, sheet and roll converting capabilities in the flexible foodservice packaging industry. We manufacture high-quality custom packages on 130 different production lines to provide a wide variety of custom package and print designs. With our efficient, superior F&K presses, we can deliver state-of-the-art graphics capabilities that help differentiate your products on the shelf and on the go. Our long-term commitment to innovation and practical solutions enables us to expertly consult with you on packaging design, process graphics and rigid packaging replacements.

Please review the information we need before you request a quote for a custom product

Provide the individual bag, sheet or roll size

- Bag (width, gusset, length)
- Sheet (width and length)
- Roll (roll width and length or outer diameter)

Initial order quantity needed and the annual volume (units or cases)

Name of printed design or logo

Basis weight of paper if known

Type of paper or combination of materials (foil, bio-film or glassine)

Need a film window?

- Provide an explanation of the proposed window die or panel location on the package

Number of printed colors (provide PMS numbers)

Product application (what will the package be used for?)

Case pack sizes

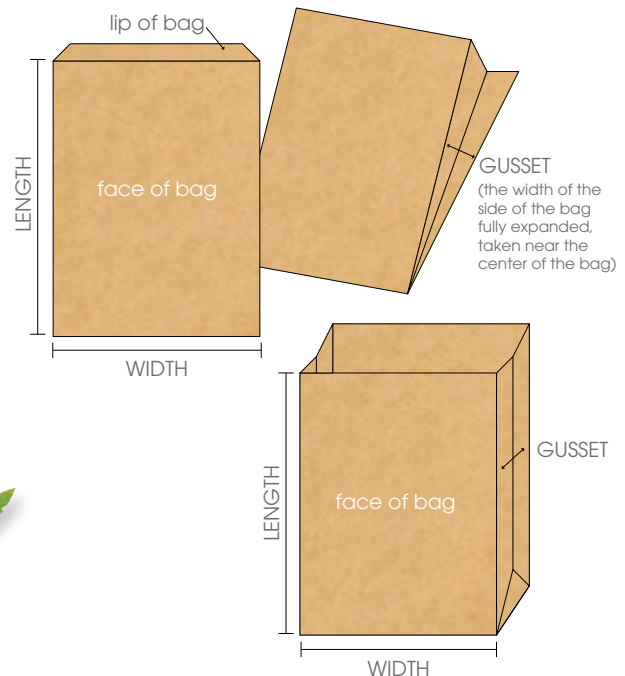
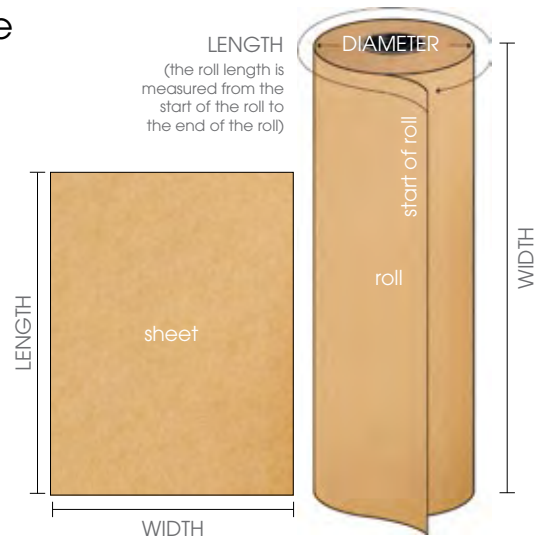
Shipping/distribution information

How to measure a bag for quotes and production:

- Measure the face of the bag (width)
- Measure the gusset of the bag (side width)
- Measure the length of the bag (not including lip)

If you have a specific question about our custom or graphics capabilities, please call 800-621-8468, ext. 8012.

For more information
about our custom converting
and graphic capabilities, find
your local representative at
www.bagcraft.com/rep



Download FLEXO Printing graphic guidelines at:
www.bagcraft.com/Graphic-Guidelines/Bagcraft_FLEXOPrintGuidelines.pdf

Download Process Printing graphic guidelines at:
www.bagcraft.com/Graphic-Guidelines/Bagcraft_ProcessPrintGuidelines.pdf



PACKAGING
BAGCRAFT
A NOVOLEX BRAND™

www.bagcraft.com



Printed on FSC Certified, 10% Post-Consumer Paper. ©August 2015 Bagcraft®.
Novolex™ is the parent company of Bagcraft®. Learn more about the Novolex™ family
of brands at novolex.com. Bagcraft® is a member of the Sustainable Packaging Coalition



www.bagcraft.com | 3900 West 43rd Street, Chicago, IL 60632 | 800-621-8468 | Fax 773-254-8204

This brochure is printed on:

